



*Total Solution Provider in Saw Device*

---

# SA868EK

Remote Control, RF SAW Filter  
Revision 0: January 2008



- Electrical Characteristics
  - Package Dimensions
  - Testing Environment
  - Frequency Characteristics
- 

**SAWNICS Inc.**

460 Cheonheung-ri, Seonggeo-eup, Cheonan-si, Chungcheongnam-do, 330-836 / Korea.  
Tel: +82 41 550 9372 / Fax: +82 41 550 9399 / [www.sawnics.com](http://www.sawnics.com)

## □ Electrical Characteristics

### Maximum Ratings

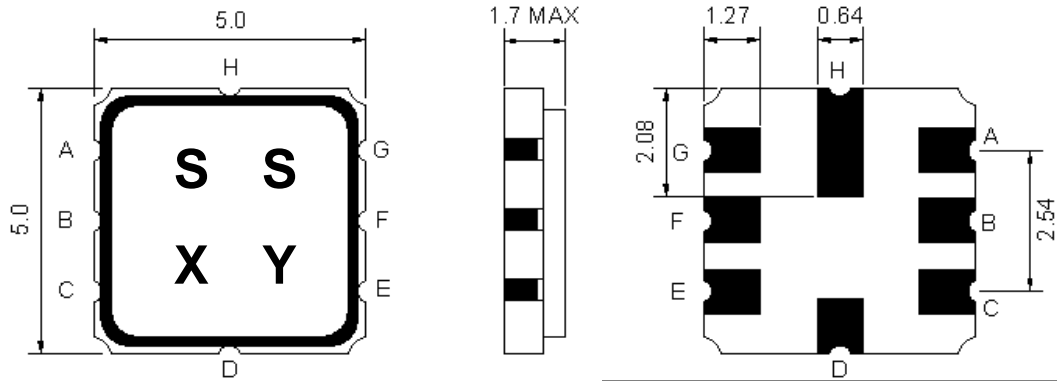
Parameters Description	Unit	Minimum	Typical	Maximum
Operating Temperature Range	°C	-45	-	+85
Storage Temperature Range	°C	-45	-	+85
Maximum DC Voltage	V	-	-	0
Maximum Input Power	dBm	-	-	0
Source Impedance (single ended) <sup>(1)</sup>	$\Omega/\rho F$	-	117//3.7	-
Load Impedance (single ended) <sup>(1)</sup>	$\Omega/\rho F$	-	117//3.7	-
Package type & size	K			
Length x Width	mm <sup>2</sup>	-	5.0 x 5.0	-
Height	mm	-	-	1.7

### Electrical Specification

Parameters Description	Unit	Minimum	Typical	Maximum
Center Frequency (Fo)	MHz	-	868.69	-
Minimum Insertion Loss within 868.7 ~ 869.38 MHz	dB	-	3.3	4.7
Relative Passband				
868.7 ~ 869.38 MHz	dB	-	1.5	3.0
867.92 ~ 869.46 MHz	dB	-	2.0	6.0
3dB Bandwidth	KHz	-	1900	-
Relative Attenuation				
<b>Attenuation</b>				
10.0 ~ 700.0 MHz	dB	50	55	-
700.0 ~ 830.0 MHz	dB	35	45	-
830.0 ~ 850.25 MHz	dB	32	40	-
850.25 ~ 865.27 MHz	dB	25	27	-
871.25 ~ 874.75 MHz	dB	11	15	-
874.75 ~ 883.25 MHz	dB	15	20	-
883.25 ~ 900.0 MHz	dB	30	32	-
900.0 ~ 1000.0 MHz	dB	35	45	-

**Notes :** (1) With Matching Network .

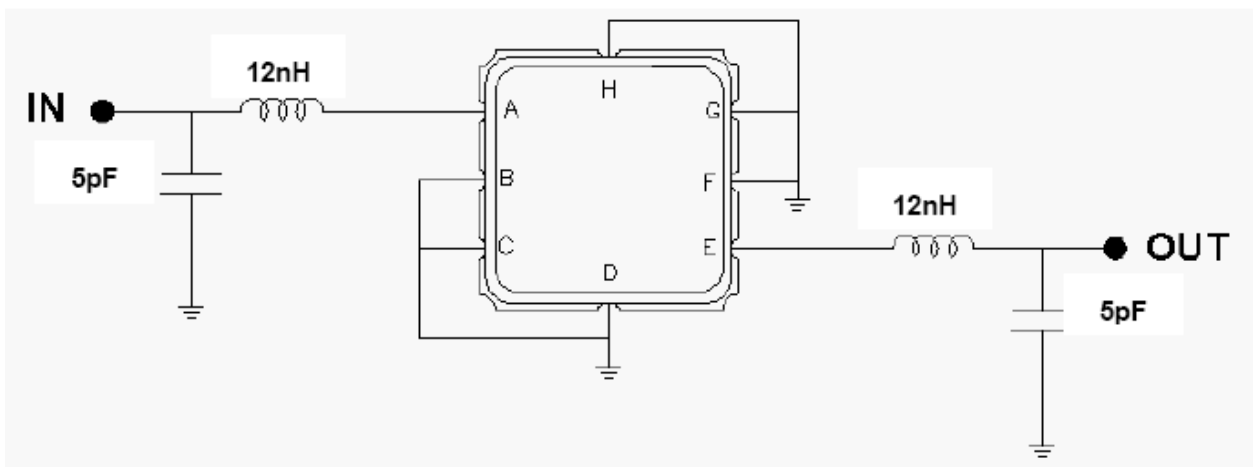
**Package Dimensions**



Marking Descriptions	
S	TCRF Application
S	Series Number
X	Date Code(Year)
Y	Date Code(Month)

Pin Description	
B, C, D, F, G, H	Ground
A	In
E	Out

**Testing Environment**



**□ Frequency Characteristics**

**Frequency Response**

